

THICK *thru* THIN

Cover ANY Floor Challenge with Level-Right, Level-Right PLUS and Level-Right FS-10. Portland Self-Leveling Underlayments

Count on the Level-Right family to turn even the toughest floor challenges into smooth level floors – just two to four hours after pouring!

NEED IT THICK? For 0-3" (0-76 mm) topping applications, Level-Right and Level-Right PLUS fill as needed – even large duck ponds and craters – with superior strength and drying speed.

NEED IT THIN? For thinner topping applications, Level-Right and Level-Right FS-10 provides 0-3/8" (0-10 mm) of concrete-capping power.

Level-Right, PLUS and FS-10 can level entire floors, new or old, and attain up to 7200 PSI (50 MPa). They work above, on or below grade, with no toweling required. Best of all, these cementitious products provide a temporary wear surface in as little as two to four hours after application.

Thick or thin, the Level-Right family can cover any floor challenge. And with authorized applicators worldwide, solutions are just a pour away.

- New construction or renovation
- Levels entire floors or transition areas, featheredge to deep fill
- Resurfaces old or damaged concrete floors
- Up to 7200 PSI (50 MPa), hydraulic cement
- Water resistant
- Caps cracked, lightweight concrete
- Above, on or below grade
- Fills "duck ponds" in concrete floors
- No toweling required
- Provides a temporary wear surface in a little as two to four hours after application
- Experienced, authorized applicators worldwide
- Exceeds standards set by leading floor goods manufacturers
- Can be used in any continuous pumping machine
- Supported by Maxxon Corporation

Fast, Clean and Convenient.

Got a lot of floor to cover? Level-Right, Level-Right FS-10 helps keep your job on the fast track with installation of finished floor goods just hours after the pour. Ceramic tile can be thin set within 2 to 4 hours. Other floor goods can be installed once Level-Right, Level-Right PLUS, or Level-Right FS-10 pass a moisture test.



Level-Right Technical Data	
Function	Interior underlayment for concrete or wood subfloors, not a wearing surface.
Compressive Strengths (Modified ASTM C-109)	Typical: 3000 PSI (20.6 MPa) (3 days) 4500 PSI (31 MPa) (7 days) 5500 PSI (38 MPa) (28 days)
Flexural Strength	1260 PSI (8.7 MPa) (28 days) (ASTM C-190)
Tensile Strength	720 PSI (5 MPa) (28 days) (ASTM C-190)
Surface Burning Characteristics	Flame Spread – 0, Fuel Contribution – 0 Smoke Development – 0 (ASTM E-84)
ICBO Listed	#3433

Level-Right Technical Data	
Compressive Strengths Modified ASTM C-109	Typical: 3500 PSI (24 MPa) 1 day 4500 PSI (31 MPa) 7 days 5500-7000 PSI (38-48 MPa) 28 days
Dry Density	Approx. 120-125 lbs/ft ³ 1900-2000 kg/m ³
Tensile Strength ASTM C-109	810 PSI (6MPa)
Flexural Strength ASTM C-348	1250 PSI (9 MPa)

Level-Right FS-10 Technical Data	
Compressive Strengths Modified ASTM C-109	Typical: 1500 PSI (10.3 MPa) 1 day 5270 PSI (36.2 MPa) 7 days 5500-7200 PSI (38-50 MPa) 28 days



Pour Today, Place Floor Goods Tomorrow.

Level-Right, Lever-Right PLUS and Level-Right FS-10 help keep your job on the fast track with installation of finished floor goods just hours after the pour. Ceramic tile can be thin set within 2 to 4 hours. Other floor goods can be installed once Level-Right, Lever-Right PLUS or Level-Right FS-10 pass a moisture test.

Yield 50 lb. Bag (22.5 kg.)	25-30 sq. ft. @ ¼" thickness (2.3-2.8 m ² @ 6.3 mm)
Freeze/Thaw Resistance ASTM C-666	90%+/-3%
Dry Density	Approx. 120-125 lbs/ft ³ (1900-2000 kg/m ³)
Tensile Strength ASTM C-190	1200 PSI (8.3 MPa)
Abrasion	ASTM Taber 250 Cycles, 1000 grams load on H 22, 4" Wheels: wt. Loss 0.30 gram
Shear Bond Strength With Concrete ASTM C-882-91	1060 PSI (7.3 MPa) 56 days
Shear Bond Strength With Level-Right FS-10 ASTM C-882-91	3160 PSI (21.7 MPa) 56 days
Pull-off Bond Strength To Concrete ASTM C-882-91	180 PSI (1.2 MPa) 56 days

Installation

Preparation

Concrete subfloors must be fully cured, moisture free and have no efflorescence. The substrate surface shall be clean, dust and contaminant free. Cracks should be filled with a crack filler or an elastomeric compound. Plumbing or electrical penetrations should be packed with insulation and sealed.

Testing

For Lever-Right, Level-Right PLUS or Level-Right FS-10, filed testing must be performed in accordance with modified ASTM C 109. Before independent sampling, contact the Maxxon quality control department to ensure that proper procedure are followed.

Limitations

1. Do not pour Level-Right, Level-Right PLUS or Level-Right FS-10 where the floor temperature is less than 40 F (4.5 C) or greater than 100 F (37.7 C)
2. Protect the poured mortar from wind and sun, and from freezing temperatures for the first 72 hours.
3. The concrete subfloor must be structurally sound and able to withstand live and dead loads with a deflection limitation of L/360.
4. Level-Right, Level-Right PLUS and Level-Right FS-10 are non-structural underlayments, for interior use only, and not intended for use as wearing surfaces.
5. Level-Right, Level-Right PLUS and Level-Right FS-10 will not structurally bridge over expansion joints, saw cuts or structural cracks, which should be allowed to continue through the Level-Right, Level-Right PLUS or Level-Right FS-10. The architect or structural engineer must specify expansion joints and show their location in areas that will receive hard surface floor goods such as ceramic or



Choosing the Right Self-Leveling Underlayment

	Level-Right	Level-Right PLUS	Level-Right FS-10
Installation Depths	0-3" (76 mm)	0-1 ½" (38 mm)	0-3/8" (10 mm)
Compressive Strength	Up to 5500 psi (38 MPa)	Up to 7000 psi (48 MPa)	Up to 7200 psi (50 MPa)
Installation Over Existing Floor Goods	No shotblasting required	Shotblasting required	Shotblasting required
Polymer Modified	No	Yes	Yes
UL Rated	Yes	-	-
ICBO Listed	Yes (#3433)	-	-

Level-Right UL Design Numbers

J917	J994	L206	L505	L518	L532
J919	K906	L208	L506	L519	L534
J920	L001	L209	L507	L522	L535
J924	L003	L210	L509	L523	L536
J927	L004	L211	L511	L524	L537
J931	L005	L212	L512	L525	L541
J957	L006	L501	L513	L526	L544
J966	L201	L502	L514	L528	L546
J991	L202	L503	L515	L529	

marble tile, and hardwood flooring.

6. For Level-Right FS-10, maximum installation thickness without aggregate is ½" (13 mm). For Level-Right PLUS, maximum installation thickness is 1 ½" (38 mm). For Level Right, maximum installation thickness is 3" (76 mm). For deeper fills, call Maxxon Corporation for the Application Bulletin.
7. For applicator other than those over structural concrete call Maxxon Corporation for the Application Bulletin.
8. Concrete moisture or vapor emission must be eliminated by others prior to a Level-Right, Level-Right PLUS or Level-Right FS-10 application for below grade, on grade or suspended slabs.

SECTION 03540

Self-Leveling Concrete
Floor Underlayment

Recommended Specification for
Level-Right, Level-Right PLUS or
Level-Right FS-10 Self-Leveling
Underlayment

PART 1 GENERAL

1.01 SUMMARY

- A. This is the recommended specifications for Level-Right, Level-Right PLUS or Level-Right FS-10 Cementitious Self-Leveling Floor Underlayments for topping concrete floors.

1.02 SECTION INCLUDES

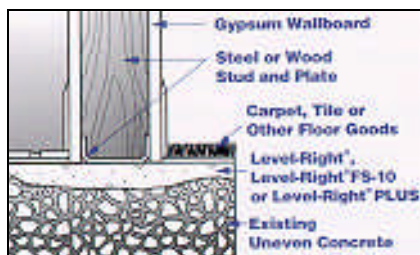
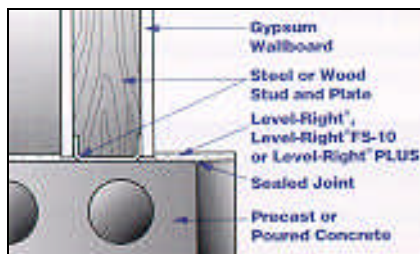
- A. Level-Right, Level-Right PLUS or Level-Right FS-10 Cementitious Self-Leveling Floor Underlayment
- B. Manufacturer Approved Primer

1.03 QUALITY ASSURANCE

- A. Installer's Qualifications: Installation of Level-Right, Level-Right PLUS or Level-Right FS-10 shall be by and applicator authorized by Maxxon Corporation using approved mixing and pumping equipment.

1.04 DELIVERY, STORAGE AND HANDLING

- A. General Requirements: Material shall be delivered in their original, unopened packages, and protected from exposure to the elements. Damaged or deteriorated materials shall be removed from the premises.



1.05 SITE CONDITIONS

- A. Environmental Requirements: Before, during and after installation of Level-Right, Level-Right PLUS or Level-Right FS-10, building interior shall be enclosed and maintained at a temperature above 40 degrees F (4.5 C) until structure and subfloor temperature are stabilized.

PART 2 PRODUCTS

2.01 MATERIALS

- A. Self-Leveling Cementitious Poured Floor Underlayment: Floor underlayment compound shall be Level-Right, Level-Right PLUS or Level-Right FS-10 Cementitious Self-Leveling Floor Underlayment as manufactured by Maxxon Corporation, Hamel, MN.
- B. Mix Water: Potable, free from impurities
- C. Concrete Primer: manufacturer Approved Primer
- D. Sealer: Manufacturer Approved Sealer

2.02 MIX DESIGNS

- A. General Requirements: Level-Right, Level-Right PLUS or Level-Right FS-10 mix proportions and methods shall be in strict accordance with product manufacturer recommendations.

PART 3 EXECUTION

3.01 PREPERATION

- A. Conditioning and Cleaning of Subfloor: Subfloor shall be structurally sound. Steel troweled concrete, concrete sealed with curing compounds, or slick or smooth substrate surfaces must be shotblast or scarified. General Contractor shall clean subfloor or remove mud, oil, grease, and other contaminating factors before arrival of the underlayment crew.
- B. Leak Prevention: Fill cracks and voids with a quick-setting caulk or patching material where leakage of Level-Right, Level-Right PLUS or Level-Right FS-10 could occur.
- C. Priming Subfloor: Prim concrete subfloor using manufacturer Approved Primer. Priming instructions vary according to the porosity of the concrete; multiple coats may be necessary.
- D. Expansion Joints: Allow joints to continue through the Level-Right, Level-Right PLUS or Level-Right FS-10 at the same width.

3.02 APPLICATION OF SELF-LEVELING FLOORING

- A. Scheduling: Application of Level-Right, Level-Right PLUS or Level-Right FS-10 shall not begin until the building is enclosed, including roof, windows, doors and other fenestration. Install after drywall installation unless tenant finish requirements identify partitioning after the pour.
- B. Application: Place Level-Right from 0"-3" (76 mm), Level-Right PLUS from 0-1 1/2" (38 mm); Level-Right FS-10 from 0-3/8" (0-10 mm). Spread and float to a smooth surface. Except at authorized joints, place underlayment as continuously as possible until application is complete so that no underlayment slurry is placed against underlayment that has obtained its initial set.
- C. Drying: General Contractor shall provide continuous ventilation and adequate heat to remove moisture from the area until the Level-Right, Level-Right PLUS or Level-Right FS-10 is dry. General contractor shall provide mechanical ventilation if necessary.

3.03 PREPERATION FOR INSTALLATION OF GLUE-DOWN FLOOR GOODS

- A. Floor Goods Attachment: See the brochure "Procedures for Attaching Finished Floor Goods to Maxxon Underlayments" for guidelines for installing finished floor goods. This procedure is not a warranty and is to be used as a guideline only.

3.04 FIELD QUALITY CONTROL

- A. Filed Samples: At least one set of 3 molded cube samples shall be taken from each day's pour during the underlayment application. Cubes shall be tested as recommended by Maxxon Corporation in accordance with modified ASTM C 109. Test result shall be available to architect and/or contractor upon request from applicator.

3.05 PROTECTION

- A. Protection from Heavy Loads: During construction, place temporary wood planking over underlayment wherever it will be subject to heavy wheeled or concentrated loads.

END OF SECTION