

AcustiCORK

Sound Control Underlayment S130

INSTALLATION INSTRUCTIONS for 1/2" Sheets on Tile Floors on a Concrete Slab without a SAuspended Ceiling

The following installation instructions are a recommendation but are not intended as a definitive project specification. They are presented in an attempt to be used with recommended installation procedures as published by the National Oak Flooring Manufacturers Association, National Wood Flooring Association or your local wood flooring association.

SUBFLOOR

1. All subfloor work should be in accordance with the recommended procedures as published by the National Oak Flooring Manufacturers association and National Wood Flooring Association.
2. Concrete subfloor should be properly sloped, structurally sound, level and clean.
3. Inspect concrete subfloor for any open cracks and fill with a high grade epoxy filler.
4. Remove any excess concrete lumps or residue that may interfere with the installation of the AcustiCORK underlayment

ACOUSTICORK UNDERLAYMENT

1. Using a properly sized v-notched trowel, apply a multi-purpose latex based adhesive to the concrete slab.
2. Set 1/2" sheets in place starting at a corner of the room.
3. Proceed to cover the entire floor making sure that joints are butted tightly. **Never mechanically fasten the cork to the floor as this will severely diminish the acoustical value of the cork.**
4. Roll cork sheets in both directions with a 100# roller to make sure all the air bubbles are removed.
5. After completion, cork should cover the entire flooring area without gaps.

PERIMETER ISOLATION BARRIER

1. After the 1/2" sheets are positioned, install the pre-cut 3/4" wide, 6mm thick perimeter isolation barrier vertically around the perimeter of the entire floor including any openings or protrusions such as electrical boxes, heating ducts, cold air returns, columns or pipes in the subfloor installation. The perimeter isolation barrier **must** be installed after the 1/2" AcustiCORK sheets are installed.
2. Remove the release liner from the self-adhesive backing and place flat against the wall flush to the floor.
3. After positioning, press the isolation barrier firmly into place at all wall or vertical partitions surrounding the perimeter areas using AcustiCORK underlayments.
4. Never mechanically fasten the isolation barrier with screws, nails or staples as this will severely diminish the acoustical values of the entire sound rated floor system.

5. **After the floor is installed and grouted**, trim the isolation barrier 1/4" below the finished floor surface.

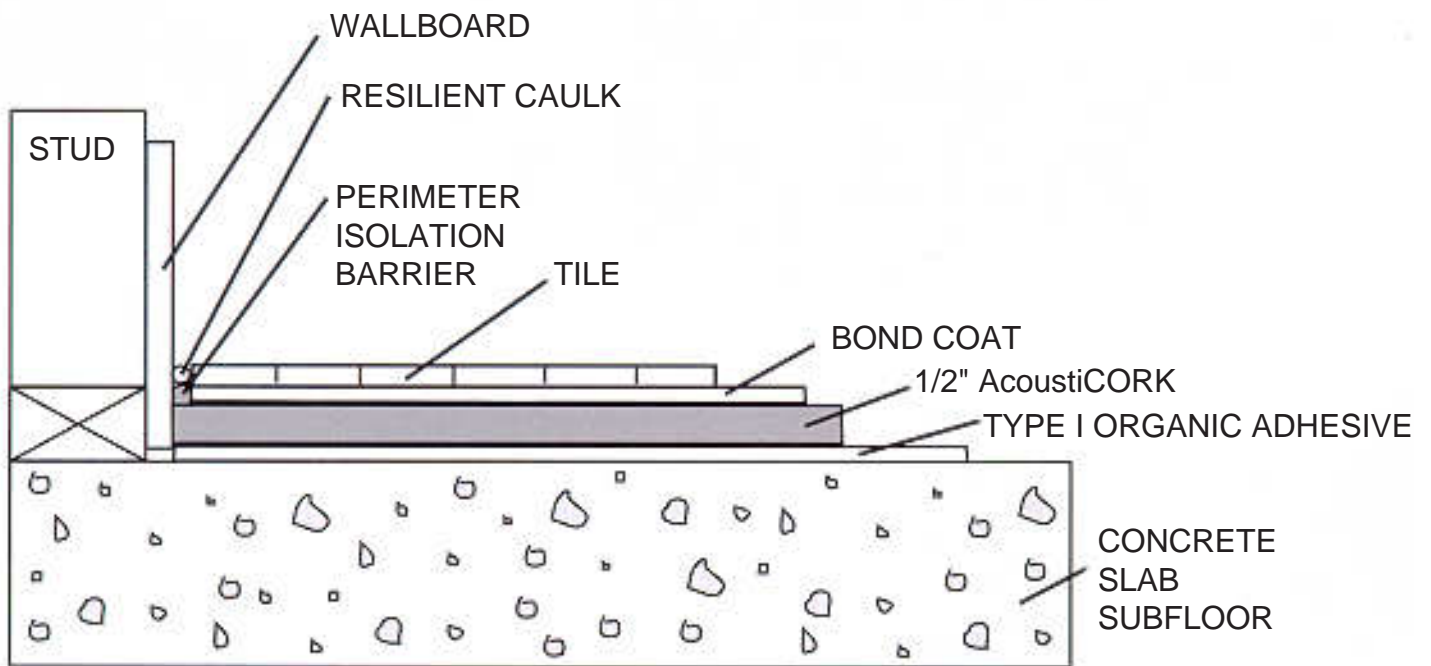
6. Caulk the trimmed areas with a bead of non-hardening acoustical sealant flush to the finished floor.

CERAMIC TILE

1. Follow manufacturer's recommended instruction for installation of finished floor tile conforming to ANSI A108.1 A, B, C and A108.1 or A108.5 depending upon method of installation.
2. After the tile is installed and grouted, visually inspect and remove, where necessary, any excess mortar, bond coat or grout that is in contact with the walls or any protrusions in the floor. Failure to do so will greatly diminish the acoustical value of the system.
3. Trim the isolation barrier 1/4" below the finished floor surface prior to the caulking of the perimeter joint.
4. Caulk the trimmed areas with a bead of non-hardening acoustical sealant, flush to the finished floor. It is imperative that grout not be used to fill the trimmed area as this will act as a conductor of noise from room to room.
5. If a baseboard is used, leave a minimum 1/8" gap between the finished floor and the bottom of the baseboard. If cove base is used, a non-hardening acoustical sealant should be used to fill the grout joint between the last row of floor tile and the base.

AcustiCORK PRODUCTS

Sound Control Underlayment & Crack Suppression Membrane
26112 110th Street PO Box 25 Trevor, WI 53179
1-800-255-2675 FAX 1-262-862-2500



Tile Floors on a Concrete Slab without Suspended Ceiling

NOTE: NOT DRAWN TO SCALE

AcoustiCORKPRODUCTS

Sound Control Underlayment & Crack Suppression Membrane
26112 110th Street PO Box 25 Trevor, WI 53179
1-800-255-2675 FAX 1-262-862-2500